

CARPi - Using Raspberry Pis for remote eduroam support

TNC22, June 2022

Matthew Slowe, Jisc

Testing eduroam deployments is hard

- SSID checks and over-the-air checks
- EAP methods
- Certificate chains
- Realms
- Firewall validation
- Getting useful errors out of devices



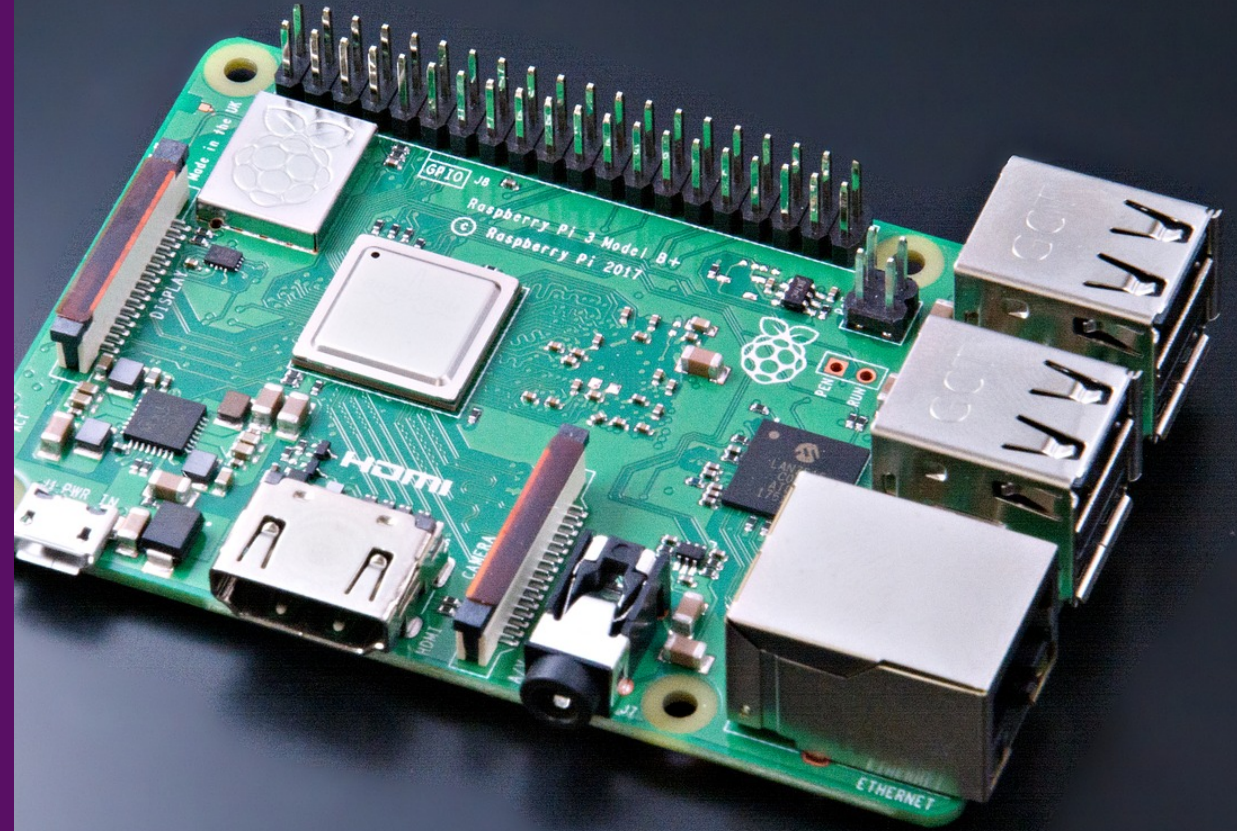


Doing things remotely

- Decent diagnostics
(`wpa_supplicant` / `eapol_test`)
- Firewall conformance (`nmap`)
- Certificate tools (`openssl`)

Make it really easy

- Raspberry Pi
- Plug'n'play
- DHCP
- Point-to-point VPN back to base

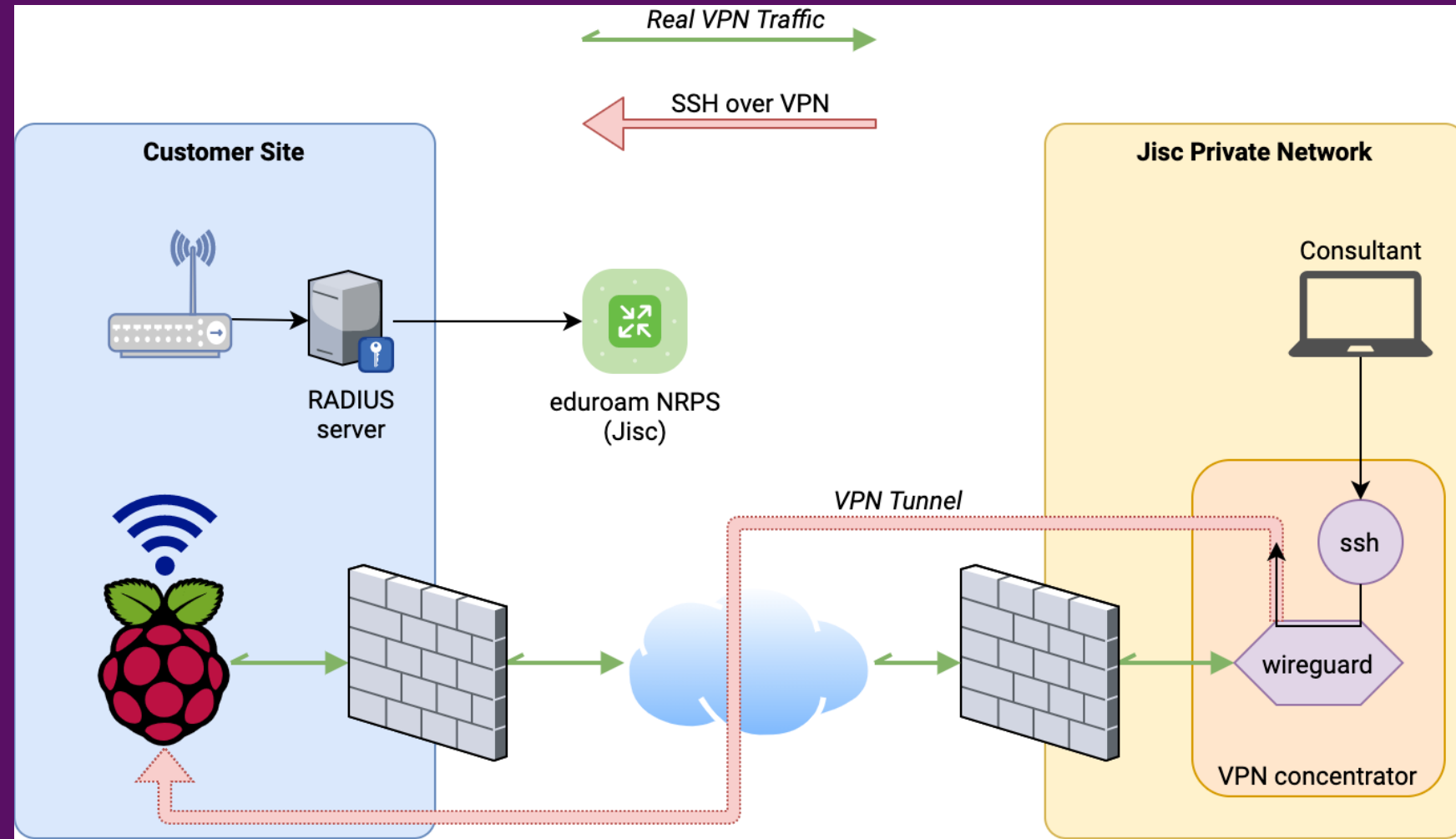


CARPi – Consultancy Assistance Raspberry Pi

In the post



System architecture



Mopping up

- Revoke VPN key
- Post it back
- Reflash

Total cost: usually under £15 (€18)



Thank you for listening

- Matthew Slowe, Jisc
- matthew.slowe@jisc.ac.uk