

# A Framework for Structuring the AI-driven Transformation in Higher Education Institutions

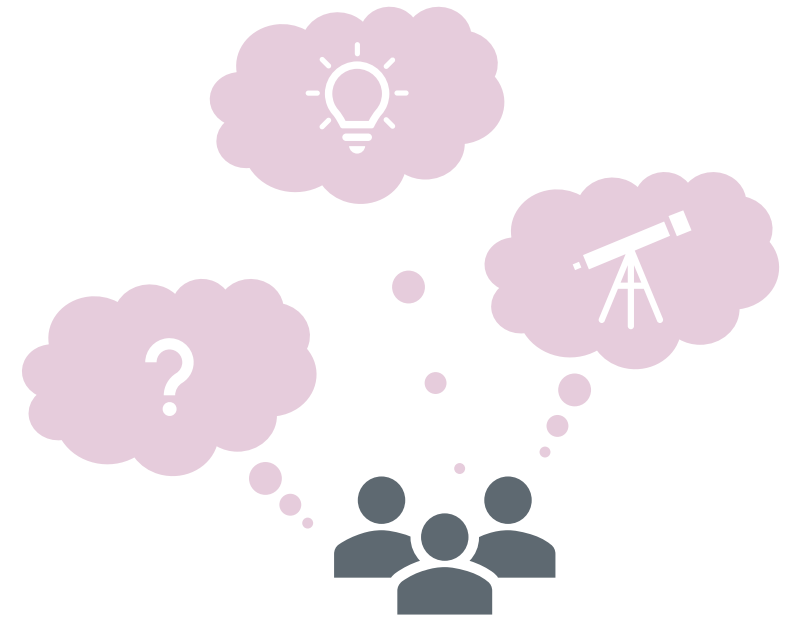
Hanna-Mari Puuska  
CSC – IT Center for Science, Finland

TNC2025  
9-13 June, 2025, Brighton, UK



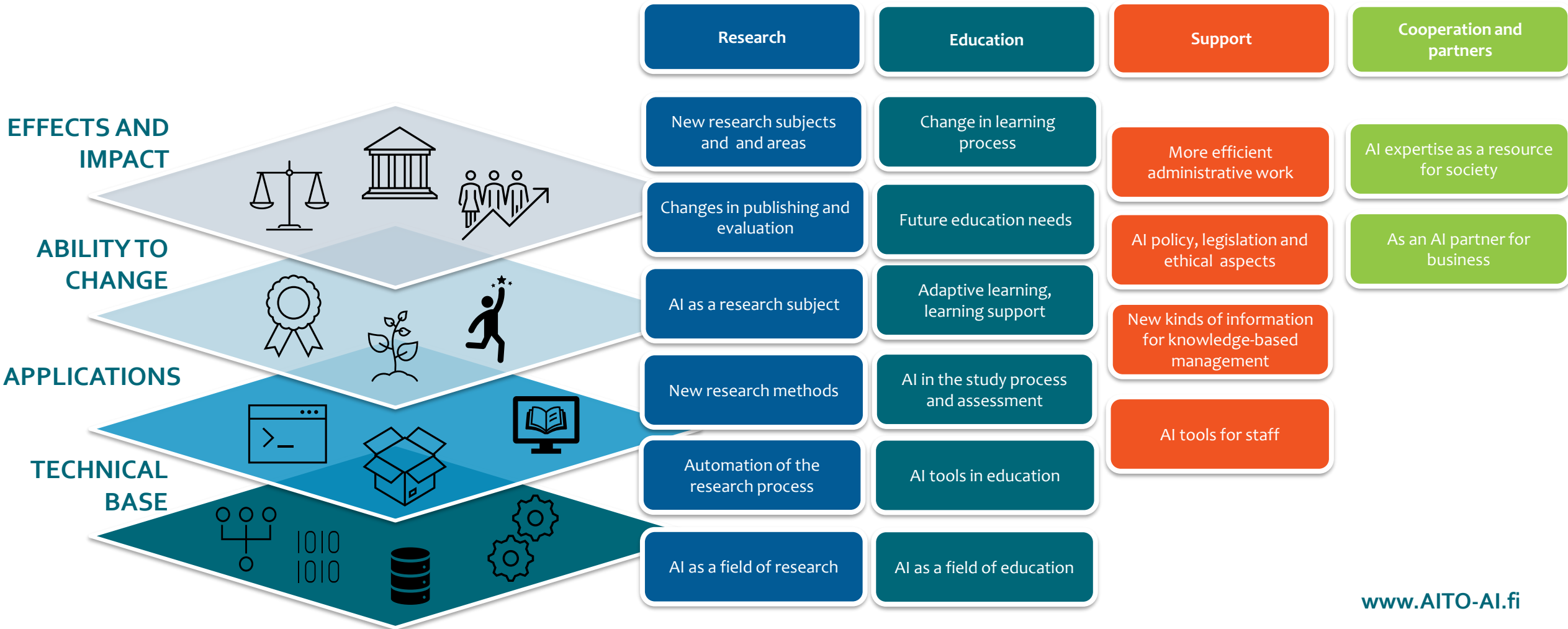
# The Need to Structure the Impact of AI on Higher Education Institutions

- The development of AI affects the entire operating environment and all the core tasks of HEIs
- The utilization of AI and its risks and opportunities are on different scales in different contexts
- Different perspectives of AI, e.g. technological, ethical, societal, economic and practical, are often mixed and therefore it is sometimes difficult to focus the discussion
- The technological development being so fast, the understanding of impacts of AI is also developing rapidly
- It is sometimes difficult to distinguish between the short-term impacts, temporary, solvable or trivial changes, and the long-term challenges for the future



# The AITO Framework – AI in Innovation, Research, and Education

How the development of AI transforms the core tasks of Higher Education Institutions?





## Hanna-Mari Puuska

Director, Digital Service Ecosystems  
[hanna-mari.puuska@csc.fi](mailto:hanna-mari.puuska@csc.fi)

CSC – IT Center for Science, Finland  
[www.csc.fi](http://www.csc.fi)