



**Identity Governance in Research and Education:
Still an Afterthought?**

Slávek Licehammer, June 2026

Head of Engineering

slavek@evolveum.com

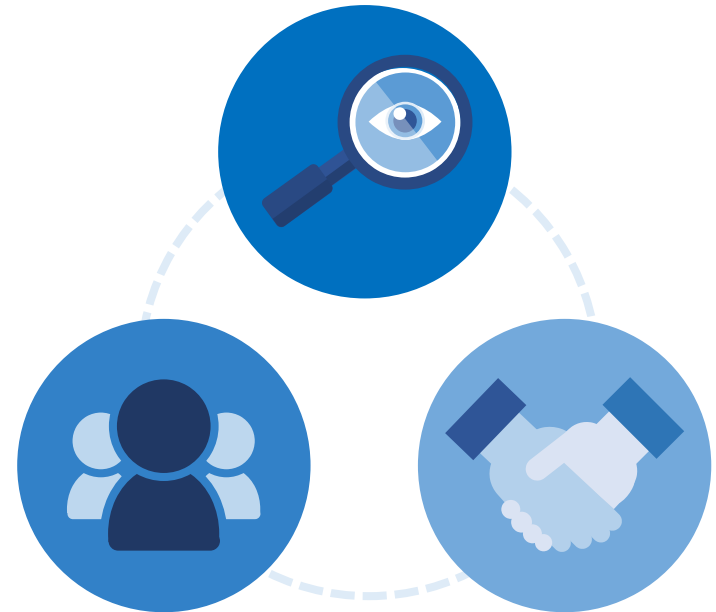
Two Worlds: Research Collaboration and Institutions

- Authentication and authorization infrastructure
- Common goal
 - Managing accesses
 - Security and compliance
- Different means
 - Source of identities
 - Trust model



Is AAI Predominantly About Authentication and Assurance?

- Enabling collaboration is the goal
 - In a secured manner
- Identity federations are tremendous help
- Especially with AAI layers and proxies
 - AARC Blueprint Architecture
- Identity, strong authentication, and assurance
- Is that enough?



New Challenges

- Cybercrime is on the rise
 - Many attacks started from compromised identity layer
- Number of regulations and compliance needs
 - GDPR, ISO 27001, NIS-2, ...
 - Forcing you to improve your governance
- Not a new problem
 - Accentuating what was often deferred



Identity Governance

- **Who** has access to **what** and **why**?
- Both reporting and enforcing
- No orphaned accounts and accesses
 - Including non-human identities
- Huge help for compliance
 - Won't solve it, but helps prove the compliance



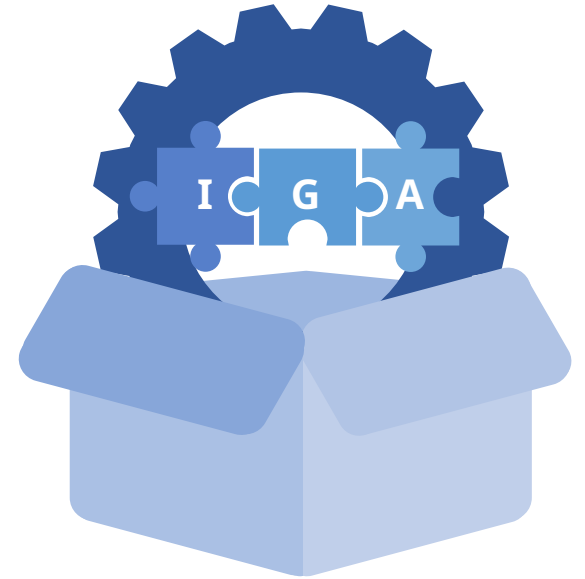
IGA - Identity Governance and Administration

- Move beyond technical automation
- Involve processes and non-technical users
- Delegated management
- Approvals
- Access certification
- Management of all identities
 - Non-human identities
 - Application catalogs



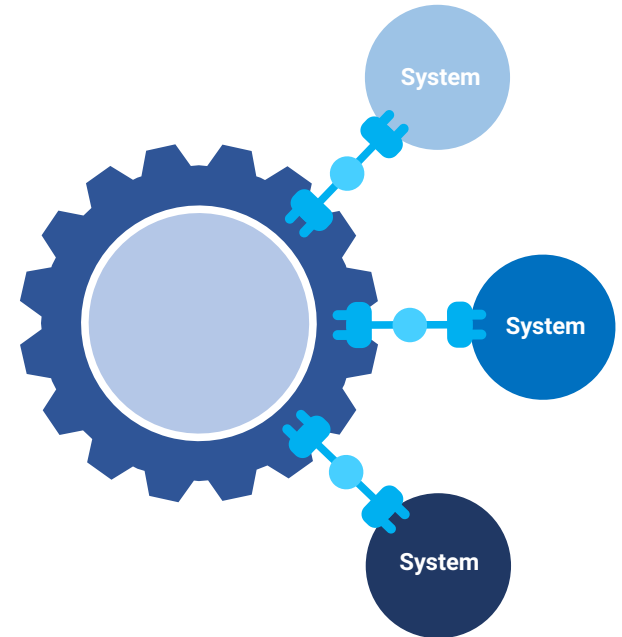
MidPoint

- Solution for identity governance and administration
- Open source
- Made and owned in EU
- Used heavily in academia
 - Part of Internet2 Trusted Access Platform
- Configurable
 - Designed to fit in existing environment
- Compatible with AARC Blueprint Architecture



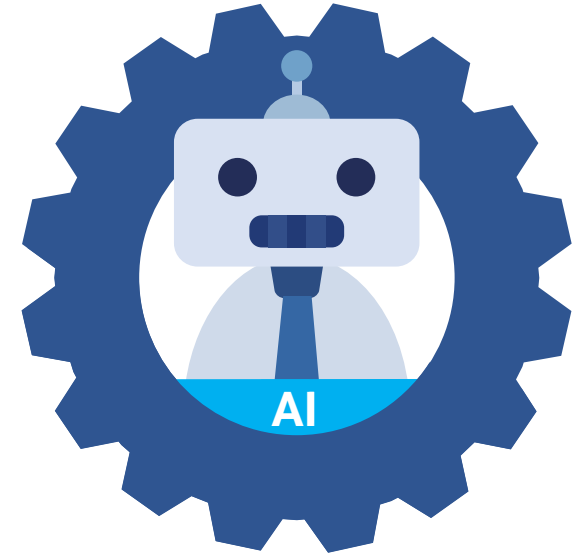
Integrations as an Obstacle for IGA

- IGA needs data in order to work
 - Otherwise you have only paperwork
- Integration of services and applications is necessary
 - There's no universal standard
 - SCIM, OIDC or SAML2 are not enough
- Identity connectors are industry standard
 - Customized for target application



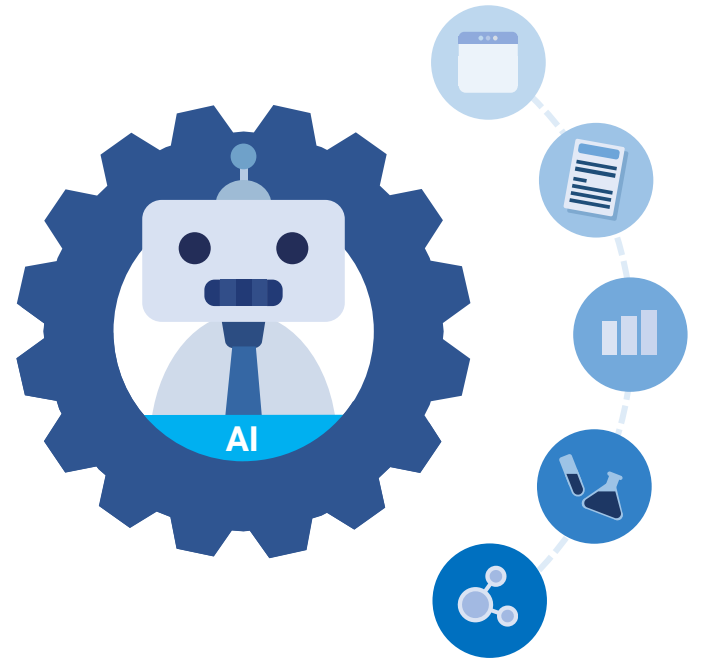
Rapid Application Onboarding with MidPilot

- Using AI to simplify application onboarding
 - By developing a connectors
- With focus on security and long-term sustainability
- Building a base framework
 - Well designed with focus on security
 - Declarative and low-code approach for adaptations
 - Currently limited to web APIs and SQL databases
- Use AI only for data transformations
 - Generate result from documentation
 - With human supervision



How Does It Work?

- Select application being onboarded
- AI will search for public API documentation
 - ... or provide it as URL or files
- Step by step process to develop the connector with human
 - Select objects, endpoints, ...
 - Fine tune suggested data transformations
 - No-code/low-code approach
- Test on existing data
- Publish the connector as open source



Interoperability

- Whole solution is open source
- Build on ConnId framework
 - Usable in any IdM/IGA solution
- Works with generic AI LLM models
 - Connect own LLM solution
- Integration catalogue
 - Available for sharing open source connectors



Conclusion

- Another technical barrier has fallen
- Security and regulations are more prominent
- IGA is an extension of federations and AAI proxies
- Use open source and community approach
- Is there anything else stopping you from implementing IGA?



Useful Links

- <https://evolveum.com/midpoint/>
- <https://evolveum.com/midpoint-in-higher-education/>
- <https://evolveum.com/ai-powered-iga/>
- <https://docs.evolveum.com/>



Thank you for your attention

Do you have any **questions**? Feel free to contact me at slavek@evolveum.com

Follow us on social media or **join us** at GitHub or Gitter!



/Evolveum



@Evolveum



/Evolveum



/Evolveum



/Evolveum

Evolveum

© 2026 Evolveum s.r.o. All rights reserved.